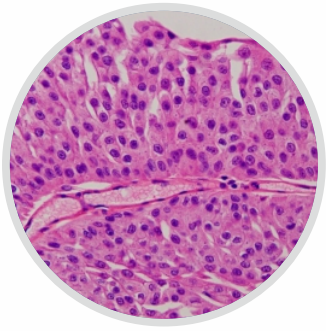




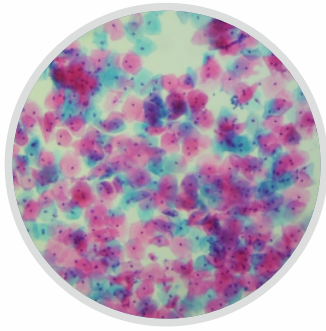
FULLY AUTOMATED INTELLIGENT STAINER

HIGH QUALITY, MADE IN SHENZHEN

DAKEWE 达科为®



H&E Staining



Papanicolaou Staining

Professional Quality Control, Perfect Staining Result

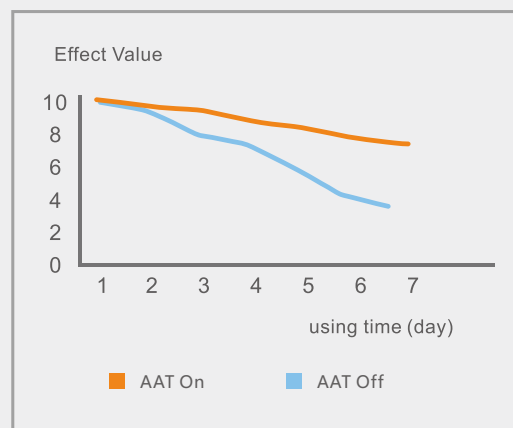
- Unique Automatic Adjustment Tech, consistent staining result.
- 1 second differentiation, clear cell nuclear and plasma.
- Calefactive reservoirs eliminate climatic affection.
- Provide standard staining reference program .
- Perfect results same for Paraffin, Frozen section and Papanicolaou Staining.
- Intellectualized Quality Control system . Worry free in whole process.



Differentiation Speed

The robotic arm can transfer directly and accurately, realizing 0.76 second differentiation.

- Curve of Hematoxylin Effects Change



Scientific Management for Reagents

- Reminder or forcible execution for reagents renewal.

Setup QCQC overview Reagent replacement record Program history Reagent details

R1 Xylene	R2 Xylene	R3 80% Alc.	R4 Eosin	R5 Eosin	R6 Eosin	R7 Eosin	R8 Eosin	R9 Hema	R10 100% Alc.	R11 100% Alc.	R12 Xylene	R13 Xylene
R14 100% Alc.	R15 100% Alc.	R16 95% Alc.	R17 EASO	R18 Bluing	R19 OG	R20 Acid Alc.	R21 95% Alc.	R22 95% Alc.	L33 Eosin	L34 Eosin	L35 Eosin	L36 Eosin

R1 Station set up informations

Quality control enabled YES NO

Warning for reagent replacement Used days Number of racks stained

Reagent in effect days Left days means No warning!

- Historical renewal records can be checked at anytime.

QCQC overview Reagent replacement record Program history Reagent details

Please choose an inquiry style:

Reagents Station Change time

Please choose a replacement changer to search: DAKEVE

Replacement record of DAKEVE

Order	Change date	Change time	Station	Reagents	Used days	Stained rack number
1	04/29/2016	17:21:47	R1	Xylene	17	1
		17:21:50	R2	Xylene	17	1
		17:21:52	R3	80% Alc.	17	1
		17:21:53	R4	Eosin	17	1
		17:21:55	R9	Hema	17	1
		17:21:56	R10	100% Alc.	17	0
		17:21:58	R14	100% Alc.	17	1

- Graphic reports of SOP can be exported directly.

Setup QCQC overview Reagent replacement record Program history Reagent details

Date Cumulative Year: 2016 Month: 04 Search

Program	Running numbers	Total time	Using frequency	Unfinished	Incomplete rate
Pap staining	2	0.4	67%	2	100%
Pap staining (fixation)	1	0.4	33%	1	100%

Running state statistic

Sum: 3

- Statistics of reagents consumption.

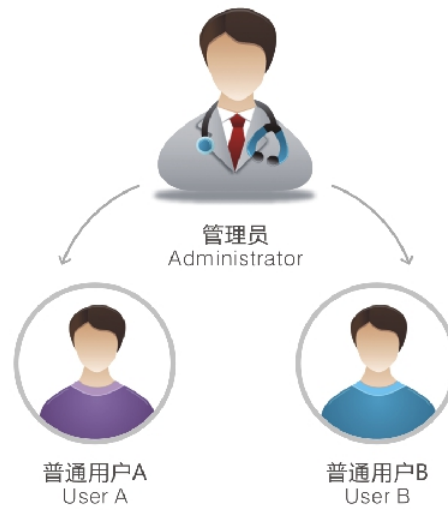
QCQC overview Reagent replacement record Program history Reagent details

Select the date to search: Start Date: 03/01/2016 End date: 04/29/2016 Search

Reagent	Replacement times	Total volume (ml)	number of slides/piece
Xylene	2	700	60
80% Alc.	1	350	30
Eosin	1	350	30
Hema	1	350	30
100% Alc.	2	700	30
EASO	1	350	30
Bluing	1	350	90
OG	1	350	30
Acid Alc.	1	350	90
95% Alc.	1	350	0

Users Grading Management

- Authorization for different users to view or to operate.
- Operation info check-able by time, user name, etc.



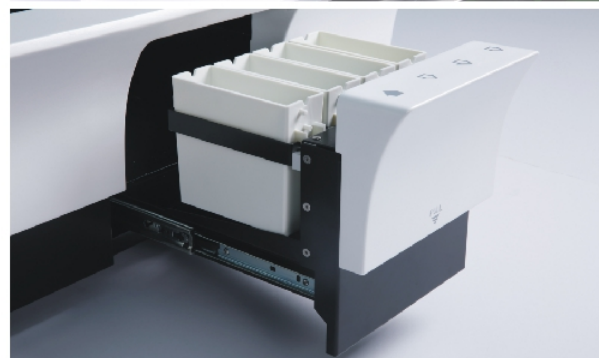
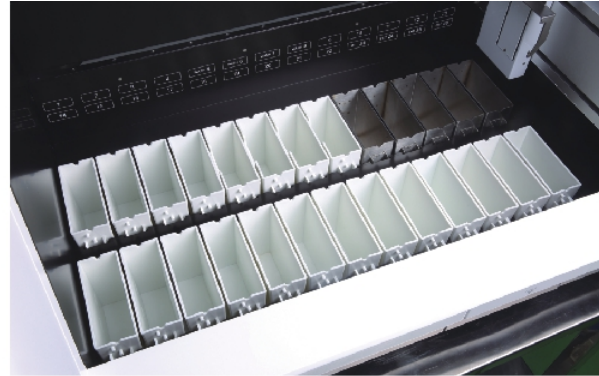
Remote Inspection via Internet

- Realtime remote-monitoring, diagnosing, alerting and inquiring



Intelligent Staining

- 1m/s high speed mechanical arm moving, high throughput.
- Hydrophobic basket, avoid reagents cross contamination.
- Different staining programs can run together.
- Prior handling for emergency slice.



Monitoring and Handling for Exhaust Fume

- Full closure design and thicker activated carbon filter.
- Fume concentration automatically monitoring and alarm.
- Strong air force intelligently evacuate.



Tank temp: 35.6 °F	Waste gas concentration: 0%
Oven temp: 89.6 °F	Filtered gas concentration: 0%

Please login system



Beautiful Fashion, Premium Quality



Designed by a
red dot design award winner

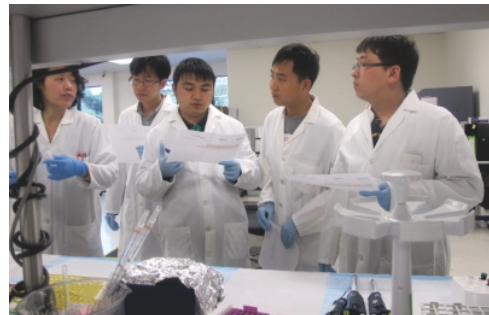
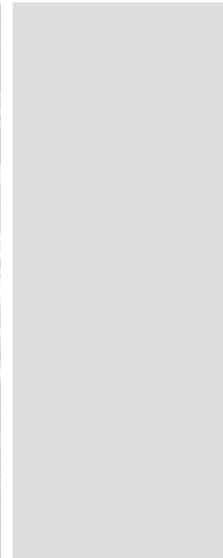
- 10.4 inch color touch screen, best angle of view.
- Multi-language interface, easy to learn and use.
- Voice alarm, faults reminding
- Protection for operator. No clamping injury.
- Drawer buffer, automatically reposition.
- Remote diagnoses, updating, training.

Technical Specifications

Dimension(mm)	1066×665×580
Weight	90kg
Programs	100
Program Steps	Up to 50
Slide Basket Capacity	30
Revervoir Positions	26
Revervoir Volume	480±20ml

About Us

- 50 doctors and masters, and more than 200 bachelors.
- Specialist team cover more than 20 professional fields, including Biology, medicine, laboratory testing, pathology, electronic and information technology and so on.
- Headquarter located in Shenzhen, branches of service and R&D center in more than 10 cities all over the world, including Beijing, Shanghai and Hongkong.
- Established cooperation with more than 100 suppliers and R&D teams coming from America, Europe, Korea and Japan.



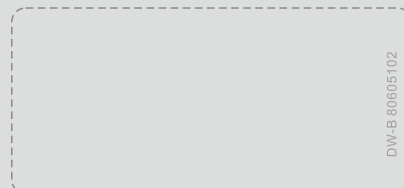


DAKEWE Medical Technologies Co., Ltd.
Add; Room 203 Unit A, Chuangye Yihao Building,
No.43 Yanshan Road, Shekou, Nanshan
district, Shenzhen 518067, China

Tel; +86 755 2664 2445
Fax; +86 755 2640 1908
Email; medical@dakewe.com
Web; www.dakewe.com



Authorized dealer



DW-B 80605102