

Microtome Blade



Dakewe(Shenzhen) medical equipment Co., Ltd

Address: 601, Building 1, Shenzhen National Biological Industrial Base,
14 Jinhui Road, Pingshan District, Shenzhen 518122, CHINA

Tel: +86 755 2640 5921

Fax: +86 755 2640 1908

Email: medical@dakewe.com

www.dakewemedical.com



Superior Quality . Excellent Service

Microtome Blade

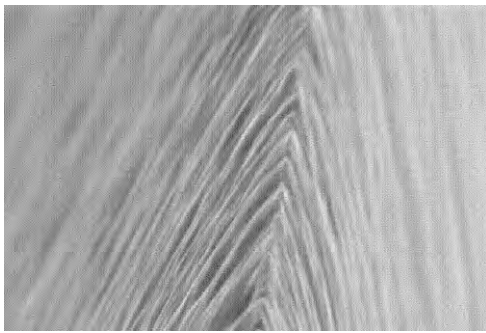
30 years' experience in blades' manufacturing process and focuses on achieving optimum sectioning quality. The sharpness and durability of the blades are significantly improved by applying plasma technology.

Made of stainless steel, the blades are suitable for rotary microtome, sliding microtome, cryostat and engineering materials microtome in pathology or research laboratories.

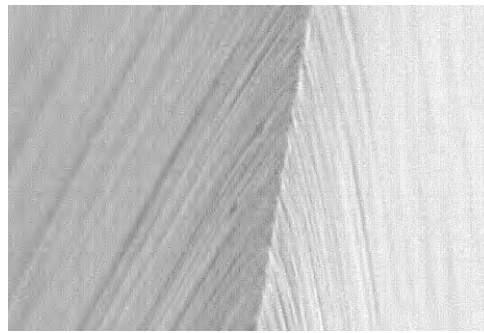
Products Features

By the plasma technology, the N^+ ion gets into the blade edge and the blade hardness can reach 1100HV (Vickers), making it sharper and more durable than the traditional blade.

The blades difference between the plasma technology processed and without can be clearly seen under the scanning electron microscope.



Plasma Process



Conventional Process

Products Models

Classification	Model	Quantity	Description
Low Profile	BS1	50 pcs/box	For soft specimens
	BH3	50 pcs/box	For hard specimens
High Profile	BC5	50 pcs/box	For cryo specimens

Product Application

Triangle mark up when placing the blade

