

SUPERIOR QUALITY · EXCELLENT SERVICE

Provide better service

We have a comprehensive customer service system and have established service organizations on different continents. If any problems or technical support are required, Dakewe will provide service, in accordance with the customer, in a timely manner.



■ After-sales service area
■ Dakewe Headquarter

DP360 Technical Parameters	
Instrument size (W x D x H)	1066 * 700 * 630 mm
Net weight of the whole instrument (no load)	130 kg
Power supply	800VA
Voltage frequency	100-240V 50/60Hz
Total number of stations	26
Reagent tank capacity	480ml±20 ml
Program storage capacity	≥ 100 programs
Slide rack capacity	30 pcs.

CS500 Technical Parameters	
Instrument size (W x D x H)	661 * 767 * 638 mm
Net weight of the whole instrument (no load)	90 kg
Power supply	120VA
Voltage frequency	100-240V 50/60Hz
Tray output storage	90 pcs.
Cover glass box capacity	200 pcs.
Mounting media bottle capacity	250 ml



Fully Automated Intelligent Slide Stainer And Coverslipper Combo System | **DP360 / CS500**



Slide stainer and coverslipper combo system

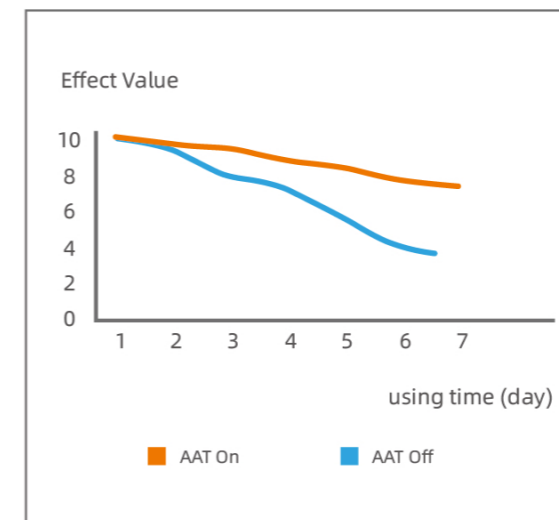
High efficiency and fully automated staining and coverslipping process, no waiting needed.
Excellent quality control system and ready-to-use consumables keep each slide consistent.



Staining and Coverslipping process
DP360/CS500



Curve of Hematoxylin
Effects Change



Expertise in quality control Excellent staining effect

- Staining time control - AAT Technology keep staining consistent.**
 According to the specimen/staining numbers and/or days of hematoxylin and eosin use, the soaking time will be gradually increased to achieve a stable staining effect.
- Staining reagent quality control - Assures reagent is always in the best condition**
 The intelligent reagent management system allows the users to monitor reagent utilization via calculating reagent usage and automatically generating a replacement reminder, as well as by producing a staining quality control report. This report enables effective traceability and management of staining quality and helps to reduce reagent costs.
- Reduce reagent towing and mutual contamination.**
 With the shaking and leaching function of the slide racks and robotic arm, the slide stainer can effectively reduce reagent towing and mutual contamination.
- High speed robotic arm**
 The robotic arm runs at a high speed with silent mode and allows up to 11 slide racks to run at the same time. Its vertical pulling speed can be as fast as 0.76 seconds guaranteeing accurate staining time.



High throughput

High efficiency, unattended

- **High-throughput staining and coverslipping**

The innovative intelligent software algorithm facilitates between 360-600 slides to be stained in one hour (dependent on user defined protocols.) When the CS500 is attached to the DP360, the transfer process is intelligent and simple, thus no transfer device is needed.

- **Automated inspection**

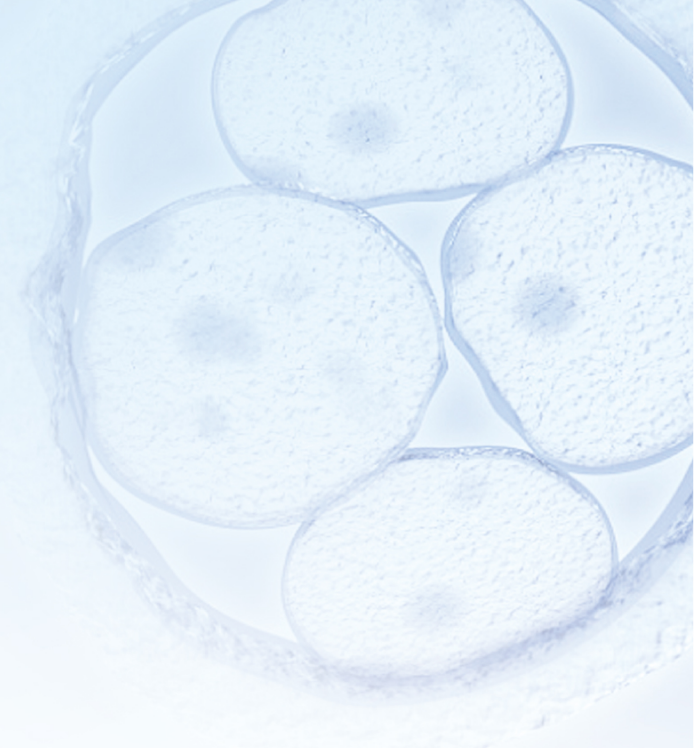
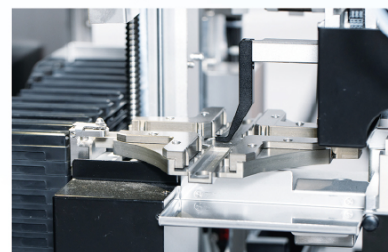
The device's performance and reagent status are automatically detected at startup, and the damaged coverslips are automatically identified and processed using a unique sensor, so that the system is always in optimal operating condition.

- **Effective mountant dispensing system**

The CS500 has a quantitative and effective mountant dispensing system to prevent spillage. To avoid needle blockage, the needle will be automatically immersed in xylene once coverslipping is complete.

- **Slide tray output**

It has a one-stop drying plate output and no manual transfer is needed, which allows for convenient image reading.



Flexibility

- **Adapt to different needs**

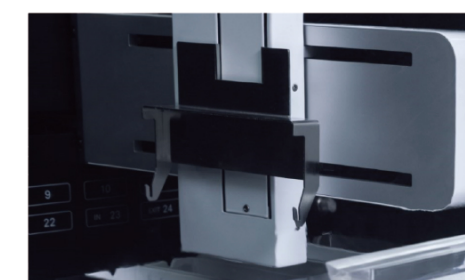
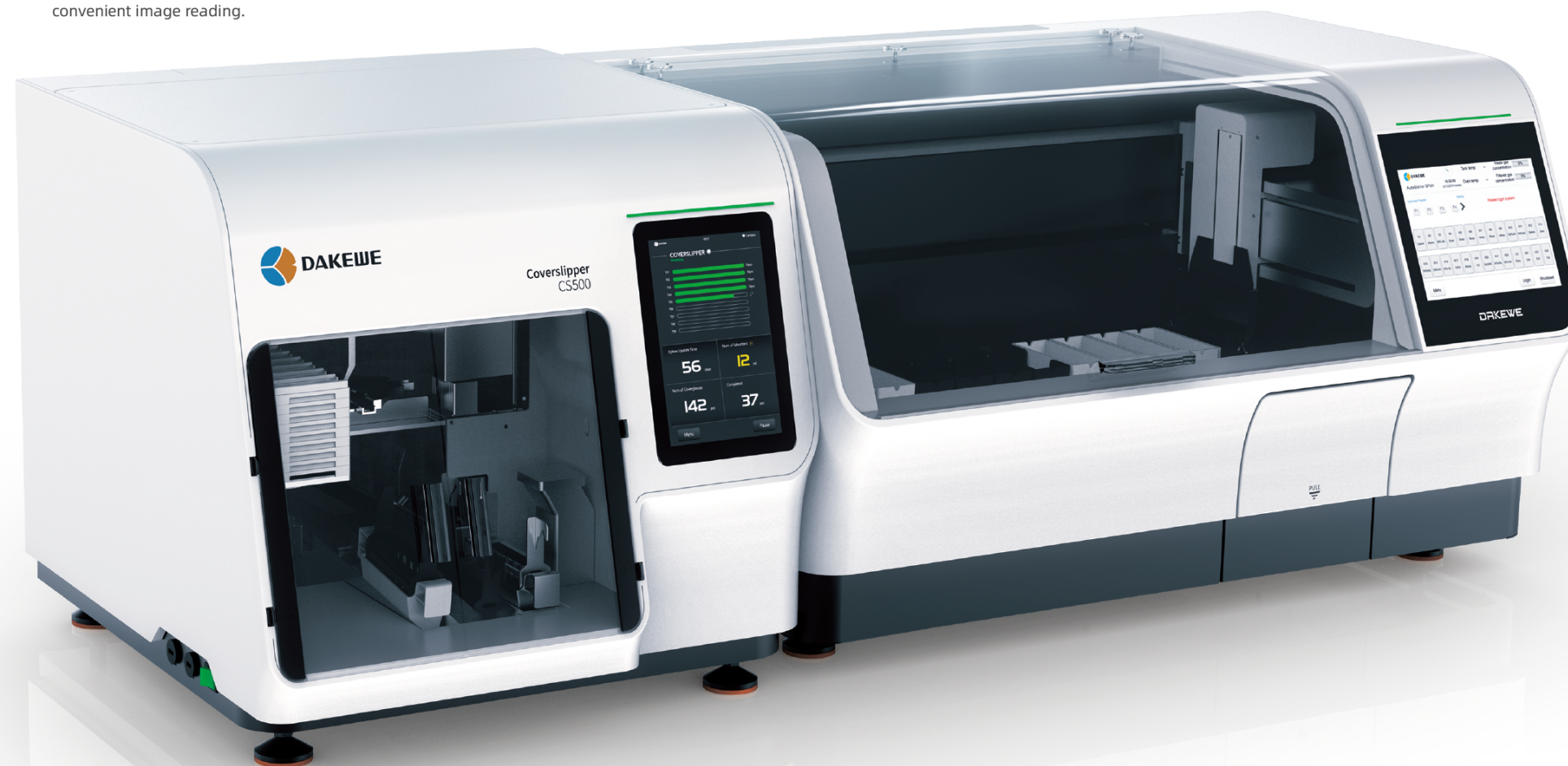
It is compatible with HE staining, Pap staining, frozen tissue staining, and other staining procedures.

- **Flexible reagent solution**

Optional exclusive ready-to-use reagent supplies for better results

- **Eliminate the impact of climate differences**

The reagent(s) can be heated to eliminate the impact of climate differences and save reagent costs.



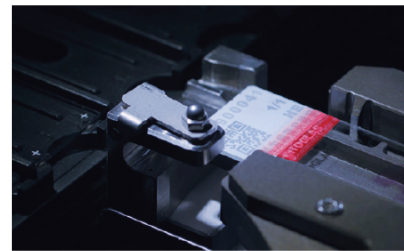
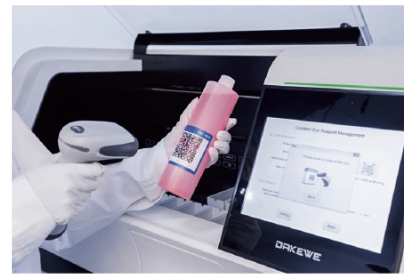


QC for each slide

Intelligent traceability is more accurate

- **Single slide can be traced more accurately**

Each slide is automatically tracked through the whole process. The database records the staining procedure, reagent bath, coverslipping process, the operator, and other dimensions for easy traceability and program optimization. The quality report is generated so that the staining results are reliable and aid in any troubleshooting occurrences. The software system can connect with the laboratory's information system (LIS / HIS).

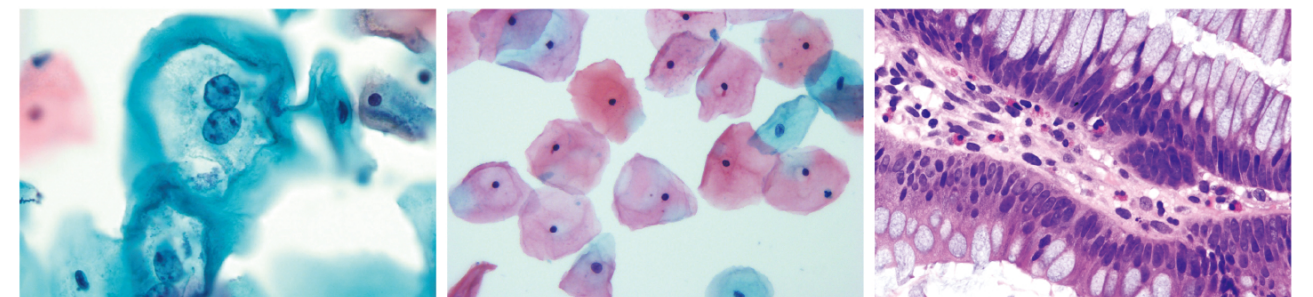
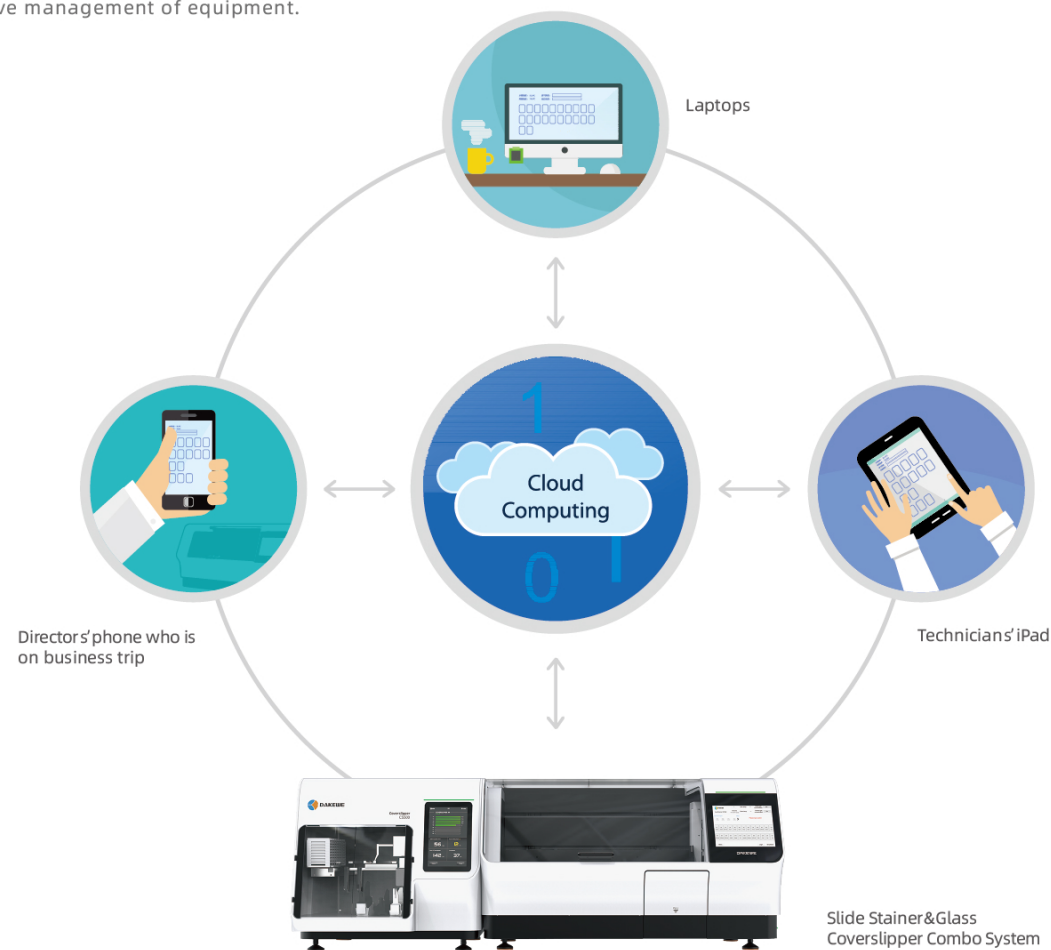


- **Human-computer interaction is more intuitive and convenient**

Display the status of the staining and coverslipping for each slide dynamically, and visually display the current reagent status and the amount of slides that have been completed.

- **Remote real-time monitoring, alarms and queries**

DAKEWE equipment cloud platform remote monitoring system (through WeChat, webpage, mail, SMS and other ways) allows real-time monitoring of equipment status and remote warning reminder, to achieve scientific and effective management of equipment.



Humanized design

Safer and more convenient to operate

- **Operation is more concise**

10 inch color touch display, user-friendly software design, simple operation process, in line with the habits of users around the world.

- **Closed design is more safe**

The intelligent exhaust gas monitoring function consists of a professional negative pressure design to ensure that the internal gas of the machine does not flow out. The exhaust gas concentration sensor monitors in real-time to protect the health and safety of the staff.

- **Multiple alarms are more secure**

Real-time voice, lighting, text and other ways to prompt and provide an intelligent operating guide program.

